

The Letcombe Register

The Letcombe Regis Parish Newsletter

January 2020

Diary

January

Bins	Mondays	7*,20	Green Recycling & Food Waste (*note holiday collection change to Tue & NO Garden)
	Mondays	13,27	Grey Landfill and Food Waste

Mon	13,20,27	7.30 - 9.00 pm	Voices in the Vale with Lisa Doscher	CCC, Village Hall, Village Hall
Tue	7,14,21,28	9.30 - 10.45 am	Hatha Yoga with Beth	Village Hall
Fri / Fri / Sat		10.00 / 11.00 / 9.00	Tennis - Cardio / Coaching / Cardio	Tennis Courts

Sun	5	10.00 am	Matins - lay led - D. Allchin	St. Andrew's
Sun	5	3.00 pm	Film Club (Free showing) - <i>'The Lion King'</i>	Village Hall
Wed	8	8.00 pm	Film Club - <i>'Can You Ever Forgive Me?'</i>	Village Hall
Thu	9	2.30 pm	Knitwits	63, Pavilion Walk
Sun	12	10.00 am	Holy Communion (<i>Altar Frontal Dedication</i> - Bishop Colin)	St. Andrew's
Sun	12	10.00 - 12.30 pm	Tennis Club - <i>Introductory session for all abilities</i>	Tennis Courts
Sun	12	8.00 pm	Greyhound - <i>Pub Quiz</i> - charity is MIND	Greyhound Inn
Mon	13	7.30 pm	WI - <i>'Talking about Art'</i> - Elizabeth Rowe	Village Hall
Tue	14	2.30 pm	Richmond - <i>Lifestyle and Wellbeing Roadshow</i>	Richmond
Wed	15	3.00 pm	Richmond - Dementia Friends tea	Richmond Café
Wed	15	7.30 pm	Gardening Club - <i>AGM & slideshows</i>	Village Hall
Fri	17	7.30 pm	<i>Bingo!</i> - jackpot £100 - all welcome (note new venue)	Sports Pavilion
Sat	18	1.30 - 4.30 pm	Nature Reserve - <i>Work Party</i>	Nature Reserve
Sun	19	10.00 am	Matins - lay led - G. Green	St. Andrew's
Sun	19	10.00 - 12.30 pm	Tennis Club - <i>Introductory session for all abilities</i>	Tennis Courts
Mon	20	3.00 pm	Richmond - <i>Ballroom Dancing Afternoon</i>	Richmond
Mon	20	8.00 pm	Parish Council Meeting	Village Hall
Thu	23	11.00 am	Richmond - Coffee Morning talk - <i>'Butler to the Queen'</i>	Richmond
Thu	23	2.30 pm	Knitwits	Fawler Paddock
Sun	26	10.00 am	Holy Communion - Revd. Mary Harwood	St. Andrew's
Sun	26	10.00 - 12.30 pm	Tennis Club - <i>Introductory session for all abilities</i>	Tennis Courts
Thu	30	3.00 pm	Richmond - <i>Reminiscence Café</i>	Richmond

February

Sun	2	10.00 am	Matins - lay led	St. Andrew's
Wed	5	8.00 pm	Book Buffs (postponed from January)	Greyhound Inn

Letcombe Regis Parish Council

The Parish Council wishes you all a Happy, Healthy and Prosperous New Year.

While many road repairs have taken place, with the recent heavy rains, more holes are emerging so please continue to report these in the usual way.

For many years concerns have continued to be raised regarding the traffic use of Court Hill. In particular the speed and size of vehicles using as a cut through route. I am pleased to report that recently, following a very productive meeting with Oxfordshire County Council, a proposal is being worked up which will include clearer better placed signage at the junction of Court Hill with the main A338 road to Wantage. The same proposals will be looked into at the junction from the B4507 Ickleton Road and Windmill Hill. In the longer term we will be considering both weight and speed restrictions, but these will take longer and may prove too costly.

At our next meeting on Monday 20th January, 8 pm, we will approve our draft budget, with no uplift in the precept. Thank you to all Councillors and the Parish Clerk who have worked so hard to ensure the effective use of village funds.

Flooding has been a significant issue to many over the past few weeks and, whilst we have not been directly effected in the Parish this time, Oxfordshire County Council have advised that you can keep an eye on the local situation by visiting the Environment Agency's webpages for up to date details on flood alerts and warnings: <https://flood-warning-information.service.gov.uk/warnings>. For more information on what to do during flooding you can also access the Oxfordshire Flood Toolkit: <https://www.oxfordshirefloodtoolkit.com/> In addition the Parish Council has an Emergency Plan in Place which looks to the support needed in any emergency. This can be found on the Parish Council Website.

If you have any issue you would like us to consider please contact the Parish Clerk or myself. Contact details always appear on the last page of the Register.

Jeanne Lapsley
Chairman,
Letcombe Regis Parish Council.

Get help with home repairs

There are services and funds available to help people (owners and private tenants) stay independent, safe and well in their homes, and Oxfordshire County Council has developed a referral service to help residents (or carers) access the right organisations in their area, to get the help they need.

The type of help that can be provided are services such as new boilers, repairs to boilers, loft or cavity wall insulation, access to a local and trustworthy repairs service and general advice on how to stay safe, well and affordably warm in your home.

For more information or to make a referral visit www.oxfordshire.gov.uk/homerepairs

Letcombes Gardening Club

The first meeting of 2020 will be on Wednesday 15th January at 7.30 in the Village Hall.

A very brief AGM will be followed by a short slideshow of gardens worth visiting.

After that we enjoy wine, nibbles and a good chat.

Potential members are most welcome.

Topical Tips

Well with Christmas done and dusted and the decorations packed away for another year it's time to look out of the windows and assess the garden. The days will be starting to get a little longer now and if you're really lucky you may already see some little flashes of colour here and there heralding the New Year.

January is the time to start to plan and prepare the garden for the new season.

If it's raining then stay under cover and wash out pots. If the sun is shining, dig over any vacant plots ready for planting.

Make sure you inspect any dahlia, canna and begonia tubers for signs of rot so you don't lose everything.

Believe it or not you can start to sow seeds this month. Sweet peas and pelargoniums benefit from being sown in January and if you're more adventurous, this is the last month you can sow seeds that need to be frosted in order to germinate.

If you haven't done so already, then cut off the old leaves of hellebores to reveal the flowers. You can also cut some of the leaves from Iris unguicularis, if you have it, to expose the flowers.

If you don't do a blitz in the autumn, then you may want to check your herbaceous borders and remove any soggy dead leaves. If you do this gradually it doesn't seem like such a thankless task!

Remember if you have fuchsias and pelargoniums then they need to be kept above a temperature of 5degC. Keep checking pelargoniums for signs of mould and remove any suspect leaves immediately (another job that you can do in the shelter of the greenhouse). Clivias can also be kept in a greenhouse above 5deg but need a period of dormancy with less light, water or feed.

Not much on the fruit and veg front this month but you can still continue to prune apple and pear trees that are planted in open ground. January is also the time to start forcing rhubarb so don't forget this deadline if you want beautiful, pale pink tender stalks! As far as veg are concerned, sit in front of the fire in a comfy chair and plan your rotation for the coming season.

That has to be the most tempting task of the month and with that the topical tips lady and her husband would like to wish you all a very successful gardening New Year!

St Andrew's Church

Sunday 12th January 2020 10:00am

Holy Communion and Dedication of the new
Altar Frontal
St. Andrew's, Letcombe Regis

We would like to extend a warm invitation to you all to join Bishop Colin for this service of Holy Communion and the dedication of a new Altar Frontal.

The Altar Frontal is in memory of Edgar Boyes who worshipped at St. Andrew's, whilst living at Richmond Retirement Village. His generous legacy has enabled Letcombe Regis Parochial Church Council to support a training curate for the Ridgeway Benefice:
The Revd Andrea Colbrook.

Please come and celebrate with us. Refreshments will be served after the service.

We look forward to welcoming Bishop Colin but, first, a look back, with thanks, to the last few weeks. St Andrew's day, November 30th, saw Rector Leonora and members of the congregation in church in the morning to welcome those who had come to donate to the gift day. It is always very humbling when people who are not church-goers still give generously to maintain our historic church which has stood at the centre of the village for centuries. Our hard-working Treasurer, David Allchin, is still counting the final donations and claiming Gift Aid but it already looks as though a very generous amount has been raised which will go a long way towards preserving St Andrew's for future generations. Heartfelt thanks to all.

St Andrew's day celebrations continued in the evening with a lively concert by the Fortescue Duo, Chris Terepin and Anna Brigham. The enthusiasm of this pair of young musicians and their skill in performing such a varied programme made for a most entertaining evening.

For a small village church, St Andrew's is blessed with wonderful music. Christine Birch yet again conjured up an amazing choir for our carol service on December 21st. With Marilyn Mitcham conducting and Joe Barber juggling his Oxford commitments to play the organ for us, the service of readings and carols was a real treat. The church was packed, it looked lovely and with mulled wine and mince pies afterwards to add to the festive spirit, we are confident that the evening will have raised a good sum for the charities we support at Christmas: Crisis and The Children's Society.

All our collections over the Christmas period go to these charities but charitable giving isn't just about money. It's good to see that kind people in the village find the time to wrap presents and leave them under the tree, providing some Christmas cheer to those who might otherwise get no presents at all. Thank you – and thanks to Susan Eden who arranges the distribution of presents and food bank donations.

As we enter a new decade, remember that St Andrew's is open daily, providing a space for quiet prayer or reflection amidst the tumult. We wish you a peaceful and blessed 2020.

Margot Collins

Margot Collins died peacefully at Sobell House Hospice on 2nd December, 2019. A funeral was held at South Oxfordshire Crematorium privately.

Book Buffs

The next meeting will be held in the Greyhound at 8pm on **Wednesday 5th of FEBRUARY** - NOT January due to a conflict of dates.

We shall be reviewing:
'*The Mayor of Casterbridge*' by Thomas Hardy and a personal choice of a book recently enjoyed. We shall also be looking back over 2019 to see which book we voted best/worst for that year.

Best wishes for Christmas and the New Year from Book Buffs to all our readers.

Richmond Letcombe Regis

Tuesday 14th January at 2.30pm:

A Lifestyle and Wellbeing Roadshow afternoon including an informative presentation and optional assessments for mobility equipment

Wednesday 15th January at 3pm:

Dementia Friends with tea and scones in the Café, everyone is invited to this free one hour information session to find out a little more about dementia.

Monday 20th January at 3pm:

Ballroom Dancing Afternoon, come along and learn a few steps in this informal session. Beginners are very much welcome. The first session is free! After that it will be £5 per person, this includes tea and cake.

Thursday 23rd January at 11am:

Coffee Morning Talk from William the Butler, about life working as a butler to the Queen

Thursday 30th January at 3pm:

Reminiscence Café, looking back at your favourite memories over tea and cake

Letcombes WI

On Monday 13th January at 7.30 pm in the Village Hall. Elizabeth Rowe will talk about the particular role of colour in '*Talking about Art*'.
Visitors Welcome.

Local Quakers

Thanks to the Grove Methodists, local Quakers will now be able to hold public Meetings for Worship in the Wantage area. Starting on the 8th January 2020, we will be meeting at the Methodist Church in Main Street, Grove.

Meetings will be at 8 p.m. on the 2nd and 4th Wednesday of the month.

Anyone who would like to experience the spiritual stillness of Quaker worship will receive a warm and friendly welcome.

Enquiries: 01235 768525

Letcombes Conservation Group

After reference to the Glover Review in this section of the August 2019 Register, how good to read in the Conservative Manifesto that 'We welcome the Glover Review and will create new National Parks and Areas of Outstanding Natural Beauty, as well as making our most loved landscapes greener, happier, healthier and open to all'. Though these specific aims, and the additional 75,000 acres of trees a year by the end of the next Parliament, did not appear in the Queen's speech on 19th December, the manifesto promises of a new Environment Bill to guarantee protection and restoration of our natural environment with an independent Office for Environmental Protection were included as was a commitment to the May 2019 legislation for a net zero carbon emissions target by 2050. The UK will host the next world climate summit in November 2020 and the UK Committee on Climate Change recommend the introduction of well-designed policies to reduce emissions without delay. Currently the UK is not on target to meet its previous commitment to the Paris Agreement target of 80% reductions on 1990 levels by 2050. To make a significant reduction, national policies require focus on alternative energy supply, transport emissions, building insulation and low-carbon heating (<https://www.theccc.org.uk/tackling-climate-change/reducing-carbon-emissions/how-the-uk-is-progressing/>).

The Vale of White Horse Local Plan 2031 (adoption Part 1 December 2016, Part 2 October 2019) has already enshrined environmental protection in several core policies. Core Policy 44: Landscape states that the key features that contribute to the nature and quality of the landscape will be protected from harmful development and where possible enhanced, citing features such as (i) trees, hedgerows, woodland, field boundaries, watercourses and water bodies; (ii) important landscape settings of settlements; (iii) topographical features; (iv) areas or features of cultural and historic value; (v) important views and visually sensitive skylines; and (vi) tranquillity and the need to protect against intrusion from light pollution, noise, and motion. High priority is also given to conservation and enhancement of the natural beauty of the North Wessex Downs AONB together with its Management Plan as required by the Countryside and Rights of Way Act 2000. Letcombe Regis is classified in accordance with Core Policy 3: Settlement Hierarchy as a smaller village with a low level of services and facilities, where any development permitted under Core Policy 4: Meeting our Housing Needs should be limited to infill of the existing built area primarily to meet local needs, in keeping with the local character, and modest and proportionate in scale. How marvellous that 2020 heralds optimism for environmental protection at both the national and local level – Happy New Year.

Friends Of Letcombe Valley Community Nature Reserve

The winter visitors have returned to the Reserve with at least two Little Egrets as well as fieldfares and redwings. There are almost no flowers to be seen yet, but plenty of lichens and mosses in fifty shades of green. Bare rock and wood are first colonised by lichen, a symbiotic relationship between algae and fungus. The fungus derives nutrients from the rock or wood and anchors the lichen. The algae photosynthesise to provide sugars for the fungus. Lichen

grow very slowly and tolerate long periods of desiccation during which no growth occurs but provide a nutrient-poor surface upon which moss eventually becomes established if there is sufficient light. Mosses are higher and faster growing than lichens, so out-compete them for available light. Mosses contribute further to building up a soil, which will ultimately support grasses and annual plants when deep and rich enough. These are the first stages of natural succession in plant colonisation.

After the festivities of Christmas and New Year, marvel at the natural ecology in the Reserve and enjoy fresh air and exercise by volunteering at this month's work party on **Saturday 18th January, 1.30 - 4.30pm**; refreshments provided mid-afternoon. There will be some light tasks to be carried out at your own pace under expert guidance. BBOWT provides most tools but warm, old, waterproof clothing and working gloves are recommended and, as it is likely to be wet underfoot, wellingtons or walking boots are advisable. Meet by the lake on the Reserve in Letcombe Regis for the safety and guidance briefing at the start of the session. Opportunities for Duke of Edinburgh Award volunteering/skills sections; under 18s accompanied by an adult please. For further details, or in case of uncertain weather conditions, please contact 769194 or 763827.

Letcombe Film Club

'The Lion King'

PG Rating
Sunday 5th January, 3pm

We have 2 films for you in January. The first is a **FREE** screening of "*The Lion King*", to round off the festive holidays. This is a recent adaptation of the much loved Disney classic, using the latest amazing live animation. Adults will love it as much as children, so we hope our film club regulars will come to enjoy this uplifting story with its great music. We look forward to seeing you there.

Refreshments from 2.30pm, film starts at 3pm.

'Can You Ever Forgive Me'

15 Rating
Wednesday 8th January, 8pm.

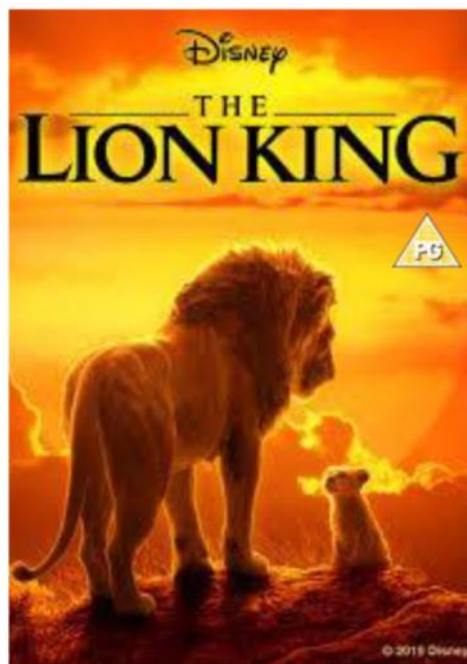
For our regular monthly film club screening we have the acclaimed black comedy, "*Can You Ever Forgive Me*". Set in New York in the early 1990's it tells the story of the life of crime of the once bestselling author of celebrity biographies, Lee Israel. When her books were no longer popular she turned to forgery to generate cash, with the help of her drinking buddy, Jack Hock.

Melissa McCarthy (of "Bridesmaids" fame) plays Lee Israel, giving a highly acclaimed performance for which she was nominated for a Best Actress Oscar in 2019. The well regarded British actor Richard E Grant plays Jack Hock, again being Oscar nominated for a Best Supporting Actor Award. The film also had an Oscar nomination for Best Screenplay Adaptation.

Refreshments from 7.30; film starts at 8pm.

We look forward to seeing you for what we hope will be a great start to the Film Club in 2020!

Future Films:
Weds 12 Feb - "*On the Basis of Sex*"
Weds 11 Mar - "*Yesterday*"



LETCOMBE FILM CLUB

**Letcombe Regis Village Hall,
Sunday 5th January**

**Free Entry! Doors open 2.30pm
Film starts at 3.00 pm**

Refreshments - Soft Drinks, Wine, Beer and Tea/Coffee

RAISING FUNDS TOWARDS A TRIP TO ESWATINI (SWAZILAND), JULY 2020

Babysitting, plant watering, pet-sitting and
dog walking services.
Any small jobs that need doing.

Sophie Hannon

sophie.hannon@outlook.com

01235 766043 | 07983 175678

References available.

Thank You



To all of the Residents of Letcombe Regis and Bassett
who very kindly gave gifts at Christmas may I wish you all
a very Happy New Year.

Your generosity is very much appreciated and I am very
lucky to be part of your community.
Kindest Regards, Paul the Postman.



LETCOMBE FILM CLUB

**Letcombe Regis Village Hall,
Wednesday 8th January**

**Tickets £5 Doors open 7.30pm
Film starts at 8.00 pm**

Refreshments on sale - Wine, Beer and Tea/Coffee

THE GREYHOUND INN

LETCOMBE REGIS · OXFORDSHIRE

HAPPY NEW YEAR!

We wish everyone a happy and successful 2020!

WHAT'S ON THIS JANUARY

Pub Quiz Sunday 12th January

with our usual host, Big Dave. 8pm sharp.

Booking essential. £2 entry. Prizes.

Our Charity this month will be MIND

Paint and Mend Closure 13-15th January

We are closed from Monday January 13th but just for

a few days. We will reopen at 10am on Thursday

January 16th for business as usual.

Scottish Tasting Menu 25th January

We invite you to join us for an exclusive 6-course

tasting menu to celebrate Burns Night

Price £45 Booking essential

Live music and country dancing

www.thegreyhoundletcombe.co.uk

email: info@thegreyhoundletcombe.co.uk

Tel: 01235 771969

Letcombe's Community Choir

Voices of the Vale is a community Choir for the Letcombes and beyond. We are open to all ages and abilities who want to share in the joy and numerous health benefits of singing together. We sing harmony songs from around the world as well as a mix of popular music. We run 7:30-9 on Mondays with a break for tea and a biscuit in the middle. Newcomers are always welcome to come for a free trial to see what it's like- email Lisadoschermusic@gmail.com.

Our spring term starts on Monday 13th January.

(Please note that on the Diary page CCC refers to Challow Cricket Club - ed.)

Letcombe Tennis Club

New Year's Resolution

Is your New Year's resolution to:- Get fitter, Get out more, or Be more involved with the village, (or something along those lines). Then free Tennis tasters, at Letcombe Recreation Ground is the perfect way to start 2020 with a dynamic and positive commitment.

WE are desperate to get villagers to have a go, even if you have never played before (from 3 years to 100+, total beginners or Wimbledon champions, all welcome!). A court is always free (other than Saturday mornings) and we have many volunteers who will come along to feed balls for you or help you hit the ball too and fro.

Your club is run for the village by the village; we know many villagers who nearly come along, so somehow we would love to help you take that step.

To discuss or get to play with, please talk to any of the committee:

Alison Robinson 76241,
Catriona 771100,
Val Yates 760674,
Geoff Owen 762680,
Ro Jelinska 762511,
Anne Jones 763969 or
Alison McClintock 410255.

Alternatively drop in on any Sunday morning from 10 to 12:30, when, starting from the 12th of January we are holding free introduction sessions for all abilities, and one of us will be there waiting for U.

Adult Coaching & Keep fit Classes

There is a Friday morning Cardio class from 10 am and a Saturday 1 hour session from 9am, plus an All Ability Coaching session from 11 am on Fridays, (if booked in early January there is a 15 day free offer for a monthly membership of £28 / month sign up, or book a private lesson for £25/hr. Please ring NTA our resident coaching team on **0800 888 6030** to join all sessions or on line via our web site www.clubspark.lta.org.uk/letcombetennisclub (>coaching > Letcombe Tennis school>Cardio or Adult Coaching).

Use it or Lose it!!

Letcombe Regis Recreation Ground and Village Hall Trust

As mentioned previously, the old Riding Club field behind the top end of the Football Pitch needs a bit of a makeover, and so far the only suggestion which has been proposed is to plant some native trees in that area. This would be a long-term project, and would need a handful of volunteers (maybe 6) to both help with planting, and also prepared to give up some time to keep an eye on them as they grow, and to keep the nettle/grass growth immediately around them clear. If you have any other suggestions for the area, or think you would be able to volunteer some time to help, then please let me know.

We have had the new commercial standard, rapid cycle dishwasher commissioned, and it has been used a couple of times by hirers, with positive feedback.

The Sports Pavilion is having some improvements done - to both the heating and the lighting. It is available for hire, if either the Village Hall isn't available, or if you are holding a smaller gathering or meeting. Please contact the Village Hall Co-ordinator if you want to know more.

We also welcome Claire back as the Hall Co-ordinator, contact is usually best done via email, to letregisvillagehall@gmail.com. Also the Hall Calendar is on the Hall website - <https://www.letcomberegishall.org/availability>, where you can check whether the Hall is free. As mentioned before, it is worth looking and booking early, as it is popular.

Richard Taylor
Chairman

Letcombe Regis Recreation Ground and Village Hall Trust

200 Club

200 Club Draw — No 10		January 2020
114	Oliver HORRIDGE	£50
59	Iain McCOUBREY	£25
83	Valerie BROADBENT	£15
153	Pamela CHARLTON	£10
24	William & Renée PRATCHETT	£5
Non-Winners draw:		
180	Robin GLYN	£25
161	Thérèse CLARKE	£20
3	Peter & Leonora HILL	£10
36	Bridget BENN	£10
186	Val YATES	£10
New Numbers draw:		
218	Mike WHEELHOUSE	£5
227	Derek MAUNDRELL	£5
233	Freddie TROTTER	£5
97	Irene ELLIS	£5
232	Ken TROTTER	£5

Hazel Lee Painter & Decorator

Interior & Exterior. Fully Insured
 Local & Reliable Female Decorator
 No job too small Mob: 07866 509683
hazel.lee78@hotmail.co.uk

Karen Ash

Reflexology and Therapeutic Massage
 Member of the Association of Reflexologists
 ITEC Qualified Therapist

Relaxing therapies to promote well being
 in your own home.
 Tel. 07901828132 email. angel.kw@hotmail.co.uk

Personal Assistant/Carer

DBS checked/insured
 Teaching/Management background.
 Five years as an Activity Organiser
 in residential homes
 For help or support please call 07968983673

Mel Taylor Photography

Specialising in Providing Fine Art Dog, Equine,
 Newborn and Child Portrait Photography
 Portraits Studio or Location, See website for full details
www.meltaylorphotography.co.uk
 01235 763359 or 07818427876

The Barn Tea Rooms, Court Hill Centre

Homemade cakes, light lunches.
 Just off A338 on the Ridgeway - and it's all
 downhill on the way back!
Open 7 days a week 10.30 to 4.00
 Tel: 01235 760253

Registered Dietitian

Liane Reeves, BSc (Hons) Nutrition, MSc Allergy
 HCPC registered, MBDA

Expert personalised dietary advice for adults and children.
 Consultations held at Wantage Osteopathic Practice, 1
 Church St. Wantage. To discuss how dietary advice can help
 you and to arrange an appointment: Tel: 07947 053396
 Email: info@reevesdiets.co.uk www.reevesdiets.co.uk

**COMPUTER PROBLEMS?
 CONVERSION TO WINDOWS 10?**

A locally-based service (from Letcombe Bassett) has
 been helping people here for the last 15 years
Moderate Rates Same Day Service
Charles Rowe Tel: (01235) 766000 anytime
 Email: ccrowe@waitrose.com

Clare Mowforth

Personal Trainer - Pre & Postnatal Exercise Classes
 Group Exercise - Circuits - HIIT - Running Programs
Engage, Restore, Transform
clare@coreprogress.co.uk 07732 036 072
www.coreprogress.co.uk /facebook.com/coreprogressPT

MILLBROOK SERVICES

EST. SINCE 1994

**PROFESSIONAL CARPET CLEANING
 & WINDOW CLEANING**
 FULLY INSURED

millbrookservices1@gmail.com
 TEL: 01235 511541 MOB: 078144 28395
 DIDCOT. OXFORDSHIRE
 Visit our webpage to view all our services
www.millbrookcleaning.co.uk

**trotter
 treeworks**



Ian Trotter – arborist
 NC Arb, ISA Cert Arb

- tree crown reducing/
 thinning/lifting/reshaping
- pollarding
- tree felling/dismantling
- fruit tree pruning
- hedge trimming/removals

t: 01235 258575
 m: 07771 538575

www.trottertreeworks.co.uk

Gabi's Cleaning Service



If you need help to keep
 Your house tidy please
 don't hesitate to ring Gabi
 References are available
**Cleaning
 Ironing
 Carpet Cleaning**

07771391209/ 07917192554
Gabipapp@icloud.com

Whatsapp/
 Viber/
 Messenger



Garden & Plant Design

**RHS Qualified
 Plantswoman and Horticulturalist**

Does your garden need re-designing?
 Do you have a border that needs rejuvenating;
 a shady, dry, or damp area that needs attention?
 Or would you like one-on-one practical
 gardening advice?

Whatever your gardening needs, please email:
helenajwhall@hotmail.com

Football Club

Tennis News on page 6

The weather was the only real winner in December as rain allowed us to only play two games. We won both of these difficult away fixtures without conceding a goal, winning 1-0 at Faingdon and 2-0 at Kintbury. We are now top of Hellenic League Division Two West, although Highworth Town reserves would go above us if they won their games in hand.

Our young reserve team continue to do well, and reached the last 16 of the Berks & Bucks Junior cup with a 2-0 win away to Woodley `A`. We then lost 1-0 in a close `top of the table` clash at home to Watlington reserves, and they moved above us to the top of the league. We then beat Drayton reserves 5-1 at home, and the league looks as though it will be a close finish between Benson Lions, Watlington reserves and ourselves.

Fixtures for January have not yet been published.

Compiled by Francesca Engelmann, 2, The Old Stables, Warborough Road, OX12 9LD Tel: 01235 769310

Email: Register@oldstableyard.co.uk

The views expressed in the Register do not necessarily reflect the views of Letcombe Regis Parish Council.

Deadline for inclusion is always the 27th of each month.

The Register is also available to view, along with much more information, on the Village Website:

www.letcomberegispc.org